



Washington State Department of  
Labor & Industries

Insurance Services

# Claim Resolution Structured Settlement Agreements

*Debra Hatzialexiou*  
*Legal Services Program  
Manager*



# CRSSA Basics

- Worker is 50 years or older
- Claim is six months old
- Allowance order is final
- Parties
- Voluntary program
- Not Option 3



# Who is a Good Candidate?

- Needs retraining
- Singular work history
- No HS degree or GED
- Not ATW full time



# Terms of Settlement

- Claim closure
- Periodic payments
- **May** reopen for MEDICAL only
- No further \$/Voc benefits



# CRSSA by the Numbers

- January 1, 2012-effective date of law
- 10,222 claims reviewed
- 745 approved state fund settlements (454 SI)
- 1875 total state fund claims settled
- \$100K median state fund settlement value

# CRSSA Process

- Referral or application
- PS4 review
- Weekly meeting
- Contact parties
- Negotiate terms
- Write contract





## CRSSA Process, cont.

- Gather signatures
- File with BIIA
- Best interest conference\*
- BIIA review/decision
- Cooling off period
- Implement terms by order
- Make payments



# Timeframe for Completion of Process

- 1 day-2 weeks to review and negotiate terms
- 1-3 days to draft contract
- 1 day-2 weeks to collect signatures
- 7 days to best interest conference after filing\*
- Up to 45 calendar days for BIIA approval
- 30 day cooling off period

\*If worker is unrepresented



# The Role of the VRC

- Make referrals to the unit
- Provide your contact info
- Rely on dept for the specifics
- Continue services to ADSS
- Refer to [LNI.WA.GOV](http://LNI.WA.GOV)



# CRSSA Website

The screenshot shows the Washington State Department of Labor & Industries website. The header includes navigation links for Home, Español, and Contact, a search bar for L&I, and links for A-Z Index, Help, and My L&I. The main navigation menu features Safety & Health, Claims & Insurance (highlighted), Workplace Rights, and Trades & Licensing. The breadcrumb trail reads: Home > Claims & Insurance > Workers' Comp Claims > Benefits & Payments > Settle Your Claim. The left sidebar lists: Workers' Comp Claims, Find a Doctor, Injured? What you need to know, and Filing a Claim. The main content area is titled 'Settle Your Claim' and has three tabs: About (selected), Eligibility, and How it works. Below the tabs, there is a link to 'Download and print the forms'.

# How to Apply for a CRSSA

---

## Apply online

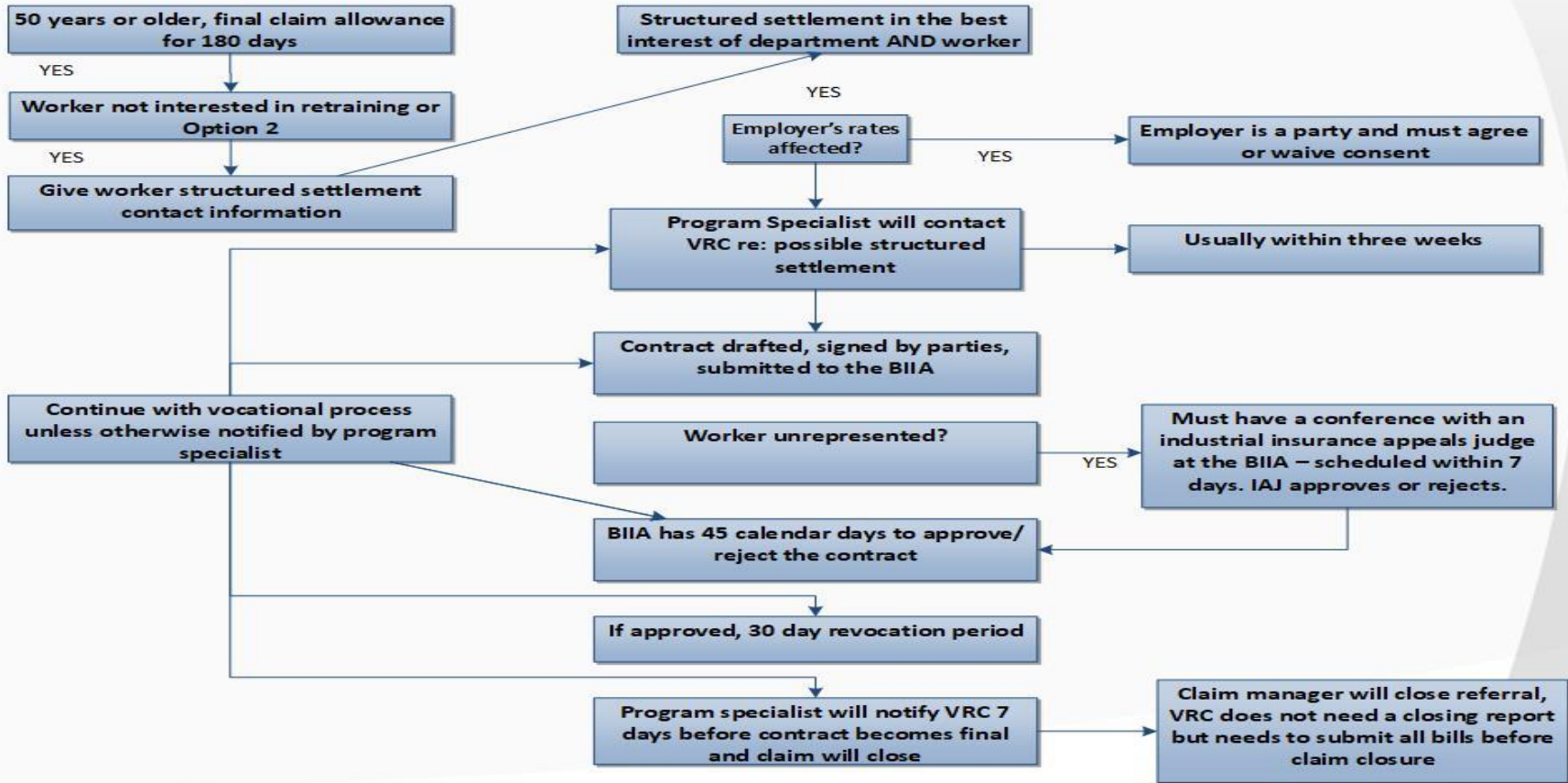
**Step 1:**

**Apply for a Structured Settlement**

**Step 2:** Fill out a Structured Settlement Income and Expense Worksheet (F240-007-000).

---

## Structured Settlement



# Thank you

Structured Settlement Unit  
360.902.101  
Settlement@lni.wa.gov

